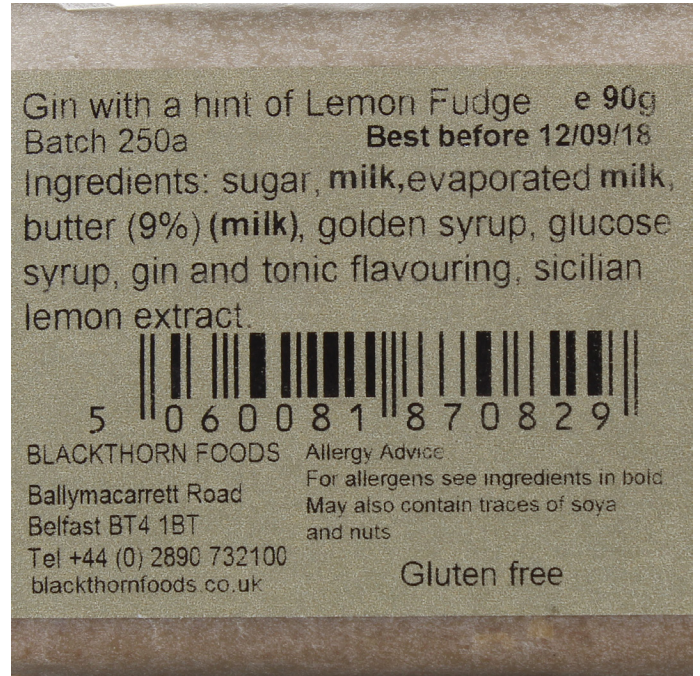


ALL INFORMATION INCLUDED BELOW IS CORRECT AS AT THE TIME THAT OUR BROCHURE WENT TO PRESS BUT PLEASE BE AWARE THAT IN THE EVENT THAT A SUBSTITUTION IS MADE, THIS NUTRITIONAL AND ALLERGEN SUMMARY MAY NOT REFLECT THE TRUE CONTENTS OF THE GIFT.

IF YOU HAVE ANY CONCERNS IN RELATION TO ALLERGENS OR ANY OTHER DIETARY REQUIREMENTS, PLEASE CONTACT US PRIOR TO PURCHASE.

VH Code 1013572

## Melting Pot Luxury Handmade Fudge Gin with a hint of Lemon 90g



VH Code 1014788

Joe and Sephs Gin and Tonic Popcorn 30g



**Popcorn with Caramel, Gin & Tonic**

**Ingredients**

Corn, Sugar, Butter (Milk), Gin (5%), Tonic Water (5%), Corn Syrup, Natural Gin Flavour.

**Allergy information**

For allergens see ingredients in **bold italic**. Made in an environment where nuts, peanuts and sesame seeds are present.

**Storage instructions**

Store in a cool, dry, dark place. Once open consume within 5 days.

**Nutritional information**

Typical values per	100g	Serving
Energy	2094kJ	335kJ
	500kcal	80kcal
Fat	24.0g	3.8g
of which saturates	15.1g	2.4g
Carbohydrate	67.8g	10.8g
of which sugars	41.2g	6.6g
Protein	4.0g	0.6g
Salt	0.9g	0.1g

Serving size = 16g

**Careful!**

May contain unpopped kernels.

- No artificial flavours, colours or preservatives
- Suitable for vegetarians

Discover over 40 other flavours at [joeandsephs.co.uk](http://joeandsephs.co.uk)

Find **joeandseph** on:



**Joe's Gourmet Foods Ltd**  
PO Box 2406, WD18 1TH

**32ge**  
(two servings per pack)

**Best before**

See bag below



30g SNACK

VH Code 1013356

## SugarSin Gin Fizz Gummies in Pouch 100g





VH Code 1013518

Farrah's of Harrogate Olde Sweet Shop Gin & Lime Milk Chocolate 100g



**Milk Chocolate Gin & Lime**  
*Colombian Milk and White Chocolate, Flavouring & Colouring*

**Ingredients:** (97%) Noche Colombian **Milk** Chocolate (Cocoa Solids 40% Min, **Milk** Solids 14.5% Min)(sugar, cocoa butter, cocoa mass, **milk** powder, emulsifier: **soya** lecithin; flavouring: natural vanilla), (2%) Glaciar Colombian White Chocolate (Cocoa Solids 35% Min, **Milk** Solids 24% Min)(sugar, cocoa butter, **milk** powder, emulsifier: **soya** lecithin; vanilla extract), (<1%) Natural Gin Flavouring, (<1%) Colour: Copper Chlorophyllin - E141; (<1%) Natural Lime Flavouring

**Allergy advice:** For allergens see ingredients in **bold**.  
Produced in a factory that handles **Nuts**.

**Store in cool, dry conditions,  
out of direct sunlight**

**100g e**

Packed By:  
**FARRAH'S**  
ESTD 1840  
Harrogate, HG1 4PY  
[www.OldeSweetShop.co.uk](http://www.OldeSweetShop.co.uk)

  
5 036599 225956

Nutritional Information	
Typical Values	Per 100g
Energy kJ/kcal	2428kJ/580kcal
Fat	36.95g
- of which saturates	21.97g
Carbohydrate	52.73g
- of which sugars	43.94g
Protein	5.98g
Salt	0.13g

VH Code 005366

## Gordon's Gin Miniature 5cl

