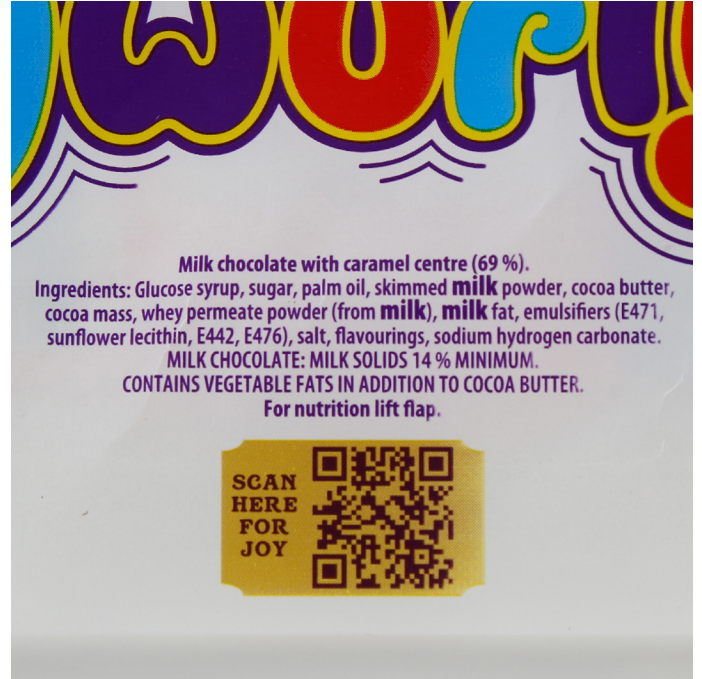


ALL INFORMATION INCLUDED BELOW IS CORRECT AS AT THE TIME THAT OUR BROCHURE WENT TO PRESS BUT PLEASE BE AWARE THAT IN THE EVENT THAT A SUBSTITUTION IS MADE, THIS NUTRITIONAL AND ALLERGEN SUMMARY MAY NOT REFLECT THE TRUE CONTENTS OF THE GIFT.

IF YOU HAVE ANY CONCERNS IN RELATION TO ALLERGENS OR ANY OTHER DIETARY REQUIREMENTS, PLEASE CONTACT US PRIOR TO PURCHASE.

VH Code 001114

Cadbury Curlywurly 26g



VH Code 001109

Candyland Dip Dab 23g



Berratt®

dip dab

Lemon flavour sherbet dip with a strawberry flavour lolly

Ingredients: Sugar, Glucose syrup, Cornflour, Acids (Citric acid, Tartaric acid), Sodium bicarbonate, Anti-caking agent (Tricalcium phosphate), Flavourings, Colour (Anthocyanins).

Nutrition Information

Typical Values	Per 100g	Per Pack (23g)
Energy	1640kJ 386kcal	377kJ 89kcal
Fat	0.6g	0.1g
of which saturates	0.3g	0.1g
Carbohydrate	95.2g	21.9g
of which sugars	81.4g	18.7g
Fibre	0.5g	0.1g
Protein	0.0g	0.0g
Salt	2.19g	0.5g

no artificial colours & flavours

suitable for vegetarians

not suitable for children under 36 months

If you are not entirely satisfied with this product, please return the pack (along with details of when and where it was purchased) to: **Tangerine Confectionery Ltd, Customer Services, PO Box 255, Pontefract WF8 9BT, UK.** This does not affect your statutory rights. Berratt® is a UK registered trademark of Tangerine Confectionery.



VH Code 001108

Candyland Black Jack (Loose) 2.7g



Black Jack

Ingredients: Glucose Syrup, Sugar, Water, Palm Oil, Colour (Vegetable Carbon), Beef Gelatine, Acid (Citric Acid), Emulsifier (**Soya** Lecithin), Aniseed Oil, Spirulina Concentrate.

Allergy Advice: For allergen advice, see ingredients in bold. May contain traces of milk.

Packed in a factory which also handles foods which may contain traces of nuts.

x 10

Batch: L8213

BBE: 31/08/2019

Packer Nr. 1

Just Sweets Ltd, Little Down Business Park, Shaftesbury, Dorset SP7 9BT

Nutritional Values	per 100g
Energy:	1387 kJ/ 327 kcal
Fat:	3.2 g
of which saturates:	1.6 g
Carbohydrate:	74.2 g
of which sugars:	41.0 g
Fibre:	0.0 g
Protein:	0.4 g
Salt:	0.79 g

Just Sweets Ltd, Little Down Business Park, Shaftesbury, Dorset

VH Code 001121

Nestle Rolos 52g



Good Food, Good Life®

know
no artificial colours, flavours or preservatives.

is FREE
Nestle.co.uk
0800 604 604 (UK)
0800 6378 5385 (ROI)
PO Box 203, York, YO91 1XY, UK.
Find out more here:
qr.Nestle.co.uk/rolo5

Milk chocolates with a soft toffee centre (45%). Milk chocolate contains milk solids 14% minimum and vegetable fat in addition to cocoa butter.

INGREDIENTS: Glucose syrup, Sugar, Whole and skimmed milk powder, Invert sugar syrup, Vegetable fat (Palm, Shea/Illipe/Mango kernel/Kokum gurgi/Sal), Cocoa mass, Cocoa butter, Sweetened condensed skimmed milk, Lactose and proteins from whey (from Milk), Whey powder (from Milk), Butterfat (from Milk), Emulsifier (Sunflower lecithin), Salt, Flavourings. Allergy advice! For allergens see ingredients in **bold**. May contain **gluten**. **Important:** Young children (less than 4 years) have limited chewing ability and could choke on small sweets.

Store cool

< 50

NUTRITION INFORMATION Typical values	Per 100g	Per serving**	Reference Intake*	% RI*
Energy	2011kJ 480kcal	524kJ 125kcal	8400kJ 2000kcal	6%
Fat	20.8g	5.4g	70g	8%
of which: saturates	11.2g	2.9g	20g	15%
Carbohydrate	68.3g	17.8g	260g	7%
of which: sugars	59.0g	15.3g	90g	17%
Fibre	1.1g	0.3g	-	-
Protein	4.2g	1.1g	50g	2%
Salt	0.30g	0.08g	6g	1%

*Reference Intake of an average adult (8400kJ/2000kcal).
**5 pieces. Pack contains 2 servings. Portions should be adjusted for children of different ages.

Good Food, Good Life®

know
Rolo® contains no artificial colours, flavours or preservatives.

Contact us FREE
www.nestle.co.uk
0800 604 604 (UK)
0800 6378 5385 (ROI)
PO Box 203, York, YO91 1XY, UK
Find out more here:
qr.Nestle.co.uk/rolo5

© Reg. Trademark of Société des Produits Nestlé S.A. NUTRITIONAL COMPASS

VH Code 001112

Candyland Refreshers 34g



VH Code 1009689

Candyland Flumps 12g



Nutrition Information			
Typical Values	Per 100g	Typical Values	Per 100g
Energy	1448kj 341kcal	Carbohydrate	81g
		of which sugars	73g
Fat	0g	Protein	4.2g
of which saturates	0g	Salt	0.03g



VH Code 1013206

Nestle Milkybar Buttons 30g



White Chocolate.
White chocolate contains vegetable fat in addition to cocoa butter.
NATURAL INGREDIENTS: Sugar, Whole milk powder (26%), Cocoa butter, Whey powder (from **Milk**), Vegetable fat (Palm/Shea/Illipe/Mango/Sal), Emulsifier (**Soya** lecithin), Natural flavouring. Allergy Advice! For allergens see ingredients in **bold**.
Important: Young children (less than 4 years) have limited chewing ability and could choke on small sweets.

NUTRITION INFORMATION Typical values	Per 100g	Per 13 Buttons	Reference Intake*	% RI*
Energy	2279kJ 546kcal	329kJ 79kcal	8400kJ 2000kcal	4%
Fat	31.6g	4.6g	70g	7%
of which: saturates	18.8g	2.7g	20g	14%
Carbohydrate	57.7g	8.3g	260g	3%
of which: sugars	57.3g	8.3g	90g	9%
Fibre	Nil	Nil	-	-
Protein	7.5g	1.1g	50g	2%
Salt	0.40g	0.06g	6g	<1%

*Reference Intake of an average adult (8400kJ/2000kcal).
Contains approximately 2 servings. Portions should be adjusted for children of different ages.

Swizzels Matlow Rainbow Drops 32g



Puffed Maize & Rice

(UK) Ingredients: Sugar, Maize, Rice, Glucose Syrup, Flavourings, Colours: Beetroot Red, Copper Chlorophyllin, Lutein, Paprika Extract.

(NL) Ingrediënten: Suiker, Mais, Rijst, Glucosestroop, Aroma's, Kleurstoffen: Bieterood, Kopercomplexen van chlorofylinen, Luteïne, Paprika extract.

Distributed by Copar B.V., 4941 VP Raamsdonksveer.

**Nutritional information/
Voedingswaarde-informatie**

Nutritional information/ Voedingswaarde-informatie		
Servings per pack/ Porties per verpakking: 2		
Serving size/ portie: 16g		
	Average values per/ Gemiddelde waarden per 100g	Average value per serving/ Gemiddelde waarden per portie
Energy/ Energie	1500kJ/354kcal	240kJ/57kcal
Fat/ Vet	0.5g	<0.1g
of which Saturates/ waarvan verzadigd	<0.1g	<0.1g
Carbohydrate/ Koolhydraten	83.3g	13.3g
of which Sugars/ waarvan suikers	64.0g	10.2g
Protein/ Eiwit	2.0g	0.3g
Salt/ Zout	<0.1g	<0.1g

VH Code 001130

Swizzels Matlow Double Dip 19g



TWO FRUITY FIZZ DIPS AND A SWIZZELSTICK

(UK) (AUS) Ingredients: Sugar, Dextrose, Acidity Regulators: Citric Acid, Malic Acid; Cornflour, Sodium Bicarbonate, Modified Starch, Stearic Acid, Anti-Caking Agent: Magnesium Carbonate; Magnesium Stearate, Flavourings, Colours: Beetroot Red, Curcumin, Lutein.
Imported and Distributed in Australia by Titalia Foods Australia Pty. Ltd., 424 Princes Hwy, Noble Park, Vic. 3174. Tel. 03 97011666.
(NL) Ingredienten: Suiker, Dextrose, Voedingszuren: Citroenzuur, Appelzuur; Maismeel, E500, Gemodificeerd Zetmeel, Stabilisator: Stearinezuur; Antiklontermiddel: Magnesiumcarbonaat; Magnesiumzouten van vetzuren; Aroma's; Kleurstoffen: Bieterood, Curcumine, Luteïne. Distributed by Copar B.V., 4941 VP Raamsdonksveer.
(N) (DK) Ingredienser: Sukker, Dextrose, Surhedsregulerende middel/ Surhedsregulerende middel: Sitronsyre (E330), Eplesyre/Æblesyre; Majsmeel/Majsmel, Natriumhydrogenkarbonat, Oksideret stivelse/Oxideret stivelse, Stearinsyre, Antiklumpningsmidler/Antiklumpemidler: Magnesiumcarbonat/Magnesiumkarbonat; Magnesiumstearat, Aromastoffer, Farve: Rødbete, Kurkumin, Lutein. Distribueres i Norge av Valera Trade Norway AS, Postboks 93, Lilleaker, 0216 OSLO.
(S) Ingredienser: Socker, Dextrol, Syror: Citronsyra, Äppelsyra; Majs mjöl, Natriumbikarbonat, Modifierad stärkelse, Stearinsyra, Klumpförebyggande medel: Magnesiumkarbonat; Magnesiumstearat, Smak-Färgämne: Rødbetsrött, Kurkumin, Lutein.
Marknadsförs av Kalasgodis, Box 5062, 14105 Kungens Kurva.

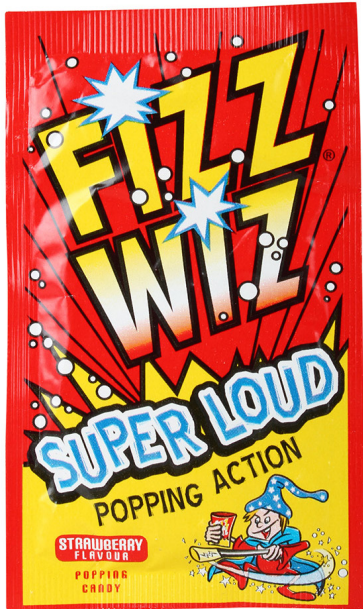
Best Before / T.H.T. / Mindst Holdbar til / Bäst före: 30/06/2017

Nutritional Information	Average values per 100g
Energy/Energie/Energi/	1651kJ/388kcal
Fat/Vet/Fett/fedt	0.5g
of which Saturates/waarvan verzadigd/Herav mettede fettysyrer/som mættede fedtsyrer/varav mättat	0.5g
Carbohydrate/Koolhydraten/ Karbohydrater/kulhydrater/Kolhydrater	93.8g
of which Sugars/waarvan suikers/Herav sukker/heraf sukkerarter/varav socker	91.6g
Protein/Eiwit/Proteiner	0.2g
Salt/Zout	1.1g



VH Code 009068

Fizz Wiz Super Loud Strawberry Flavour Popping Candy



VH Code 001120

Nestle Caramac 30g



5 000189 273573 >

PERCENTAGE INFORMATION TYPICAL VALUES	Per 100g	Per bar	Adult GDA*	% GDA*
Energy	2381 kJ 571 kcal	726 kJ 174 kcal	2000 kcal	9 %
Protein	5.9 g	1.8 g	45 g	4 %
Carbohydrate of which: sugars	55.5 g 55.5 g	16.9 g 16.9 g	230 g 90 g	7 % 19 %
Fat of which: saturates	36.1 g 29.8 g	11.0 g 9.1 g	70 g 20 g	16 % 46 %
Fibre	Nil	Nil	24 g	0 %
Sodium	0.12 g	0.04 g	2.4 g	2 %
Salt equivalent	0.30 g	0.10 g	6 g	2 %

*GDAs are guidelines. Personal requirements vary depending on age, gender, weight and activity levels.

INGREDIENTS: Vegetable fat, Sugar, Lactose, Sweetened condensed skimmed milk, Skimmed milk powder, Butterfat, Emulsifier (Sunflower lecithin), Treacle, Flavouring, Salt. May contain traces of wheat gluten.

